

Borsight Delivers Innovative, Integrated, Combat-Proven Solutions

Borsight is a Service disabled Veteran Owned Small Business that was founded on the belief that innovation leads to successful enterprise. The company has multiple divisions with management processes designed to provide Crosstalk between disciplines. Borsight's ultimate goal is providing services and products which surpass customer expectations.



C-17



C-5



KC-135



C-130J



C-130 H

Borsight, Inc.
3525 Airport Rd.
Ogden, UT 84405

www.borsight.com

G S A C

NEXT GENERATION CAPABILITIES

- Advanced threat awareness and avoidance
- Electronic attack integration
- C2 data links for tactical operations

GLOBAL SECURE AIRBORNE COMMUNICATION

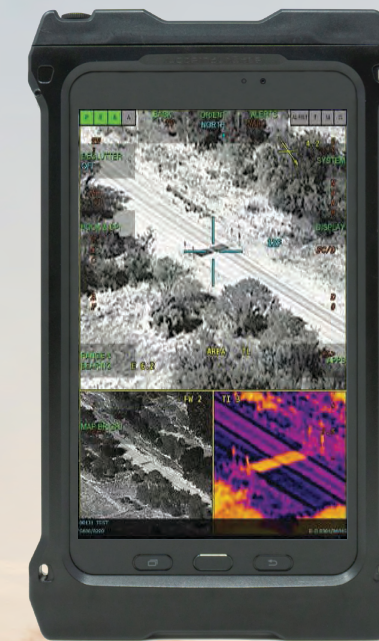


Global Gateway & Threat Avoidance

- **Friendly Information (Air-to-Air Refueling)**
 - **Advanced Threat Detection and Avoidance**
 - **National Asset Real-Time Threat Information**
 - **Correlated and Geo-Referenced Threat Data**
 - **Calculated Dynamic Threat Distance**
 - **Iridium Certus Datalink for Global Connectivity & Voice Capability**
 - **Electronic Attack Integration**
- **Next Generation Mission Processor (AEP II)**
 - **Tactical Android Displays (TAD)**
 - **Borsight Enhanced Training Solutions (BETS)**
 - ◇ **Maintenance & Installation**
 - ◇ **System Functionality**
 - ◇ **Operational Employment**
 - ◇ **Mobile Training Team**
 - ◇ **Enhanced Training**



TAD w/ Geo-Referenced Low/High



TAD w/ EOIR

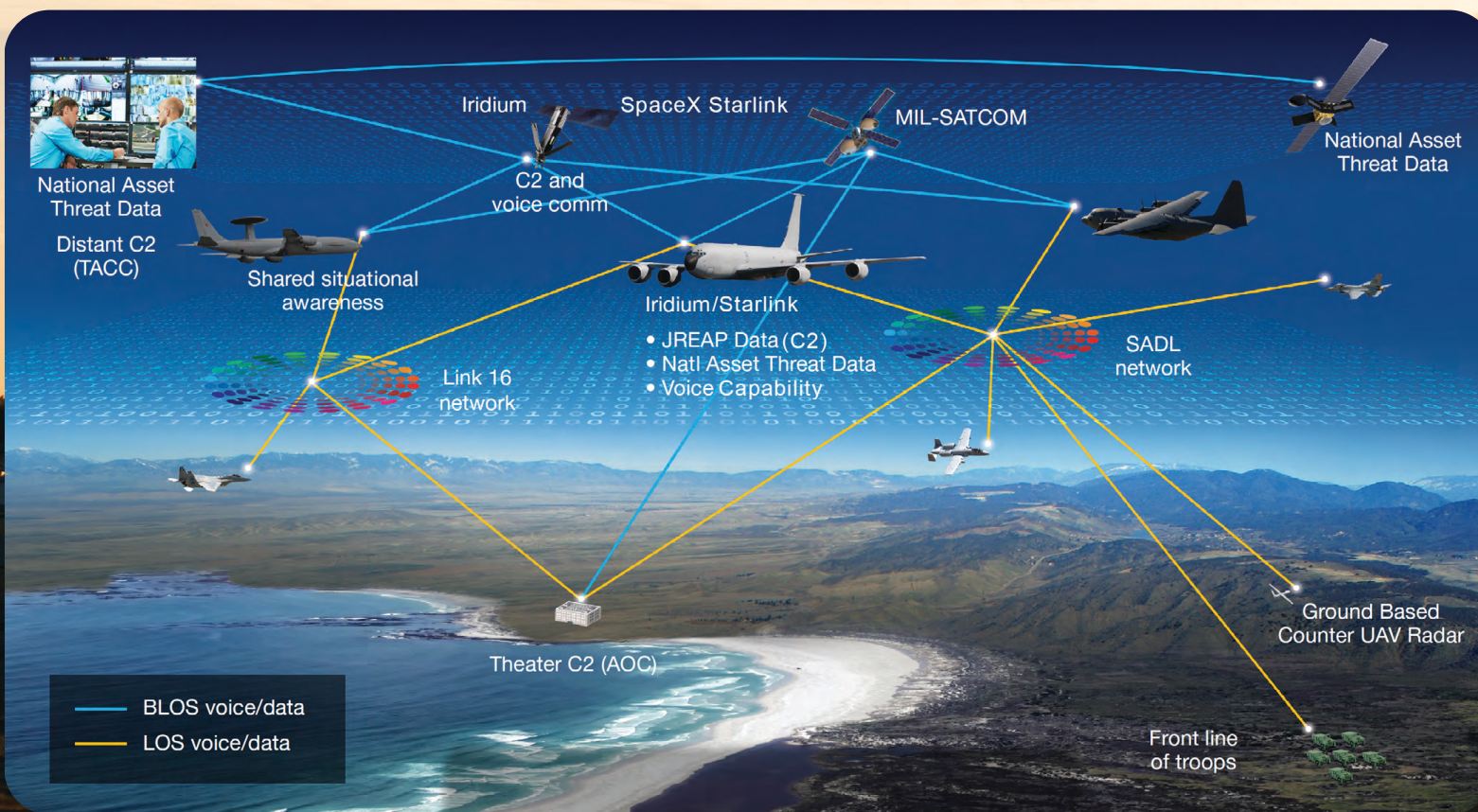


TAD w/ Calculated Dynamic Threat Distance

Tactical Android Display (TAD). Security enhanced Android tablet, portable smart display enables paperless cockpit. Rapid implementation of tactical data link communications, dynamic threat overlays and streamlined airborne operations. Uniquely integrated for complete situational awareness, threat avoidance and electronic attack. TADs mount on yokes or on stands to right/left of pilot/co-pilot/crewmember.

Global Secure Airborne Communication (GSAC) Software for Android. Borsight's Situational Awareness, Threat Protection, and Data Link Gateway software is integrated into the TAD for maximum crewmember flexibility. The Electronic Flight Bag includes Geo-referenced approach plate and charts:

- RPF Maps (FalconView Maps)
- CIB Imagery
- 1/4 Meter Imagery
- Data Link Overlays (C2 JREAP A/B/C, Custom)
- Radio Integration (AF Satcom, SADL, Link 16, SpaceX Starlink, Iridium Certus)
- Weather Overlays
- Integrated Electronic Flight Bag
- Geo-referenced Low/High Charts
- Geo-referenced Approach Plate
- Tele-Medicine for Medivac Operations (Data & Voice)
- Mobility Aircraft Communications Addressing and Reporting System (MACARS)
- Safety Services
- Litening II Targeting Pod Control and Display Integration
- Joint Precision Air Drop System II (JPADS II) Integration
- Electronic Attack Integration (EA)

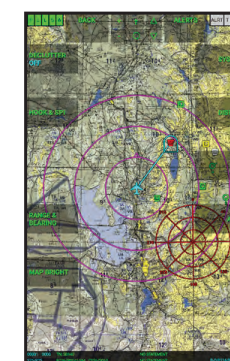


GSAC Datalink Architecture

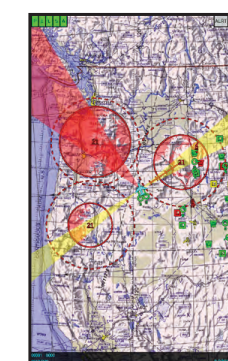
Gateway Systems. Borsight delivers next-generation with enhanced situational awareness, threat protection and communications tools. The program provides pilot, co-pilot, navigator, mission operator and boom operator with individual flight management systems and situational awareness mission displays, as well as enhanced airborne gateway options to Theater Commanders. The system utilizes multiple data link radios to provide inter-generational as well as multi-national aircraft interoperability, national asset geolocation threat data and real time threat distance calculation to maximize the aircraft mission set.



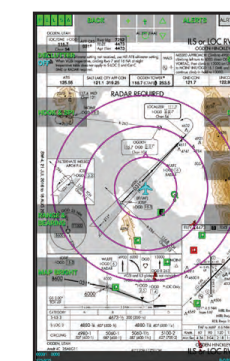
Satellite Imagery is Geo-Referenced with Air Drop Estimate (ADE) Overlay



Data Link Overlays from Link 16, SADL, AF Satcom, and Iridium Certus



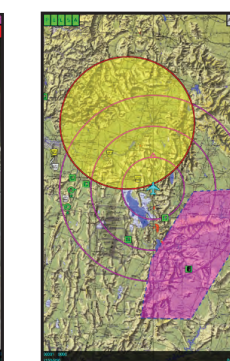
Correlated and Geo-Referenced Threat Overlays along with Calculated Dynamic Threat Distance



Electronic Flight Bag utilizes Geo-Referenced NGA/FAA Approach Plates and Charts



Sensor Control and Display Interfaced for both targeting pods and gimbaled EO/IR devices



Completely Integrated for use with JMPS, FalconView, and PFPS (example of FalconView Drawing File shown above)