

BORSIGHT DELIVERS INNOVATIVE, INTEGRATED, COMBAT-PROVEN SOLUTIONS.

Borsight is a Service Disabled Veteran Owned Small Business that was founded on the belief that innovation leads to successful enterprise. The company has multiple divisions with management processes designed to provide Crosstalk between disciplines. Borsight's ultimate goal is providing services and products which surpass customer expectations.



C-17



C-5



KC-135



C-130J



C-130H

Borsight, Inc.
3525 Airport Rd.
Ogden, UT 84405

www.borsight.com



GSACs

NEXT GENERATION CAPABILITIES

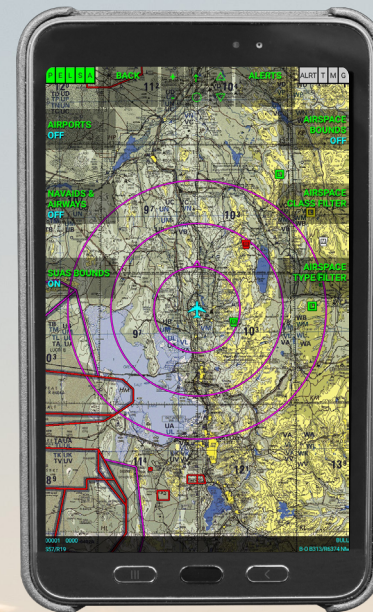
- Advanced Threat Awareness and Avoidance
- Electronic Order of Battle (EOB) Integration
- C2 Data Links Gateway for Tactical Operations

GLOBAL SECURE AIRBORNE COMMUNICATION, BATTLE MANAGEMENT, AND SURVEILLANCE

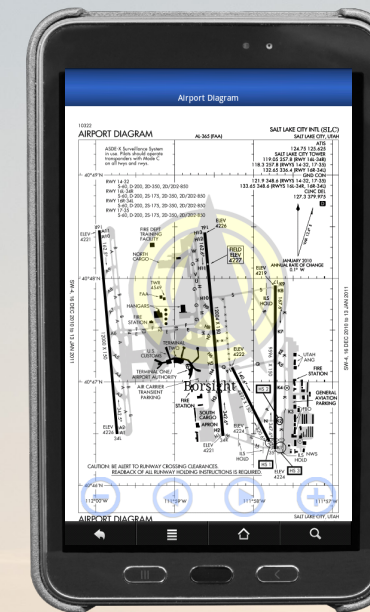


Global Gateway & Threat Avoidance

- Alternate Navigation in a GPS Denied Environment (ALT NAV)
- Commercial BLOS Enterprise Encryption Management
- C2 Battle Management
- Friendly Information (Air-to-Air Refueling)
- Advanced Threat Detection and Avoidance
- National Asset Real-Time Threat Information
- Correlated and Geo-Referenced Threat Data
- Calculated Dynamic Threat Distance
- Iridium Certus Data and Voice Link
- SpaceX Starlink Data and Voice Link
- Electronic Order of Battle Integration
- Next Generation Mission Processor
- Tactical Android Displays (TAD)
- Borsight Enhanced Training Solutions
- Enterprise Security and Management
 - ◇ Over the Air OS + SW Updates
 - ◇ Enterprise Encryption Management (EEM)
 - ◇ Iridium Certus ALT NAV
- Every Platform a Threat Sensor
- Electronic Order of Battle Reporting



Tablet w/ Geo-Referenced Low/High



Tablet w/ EFB

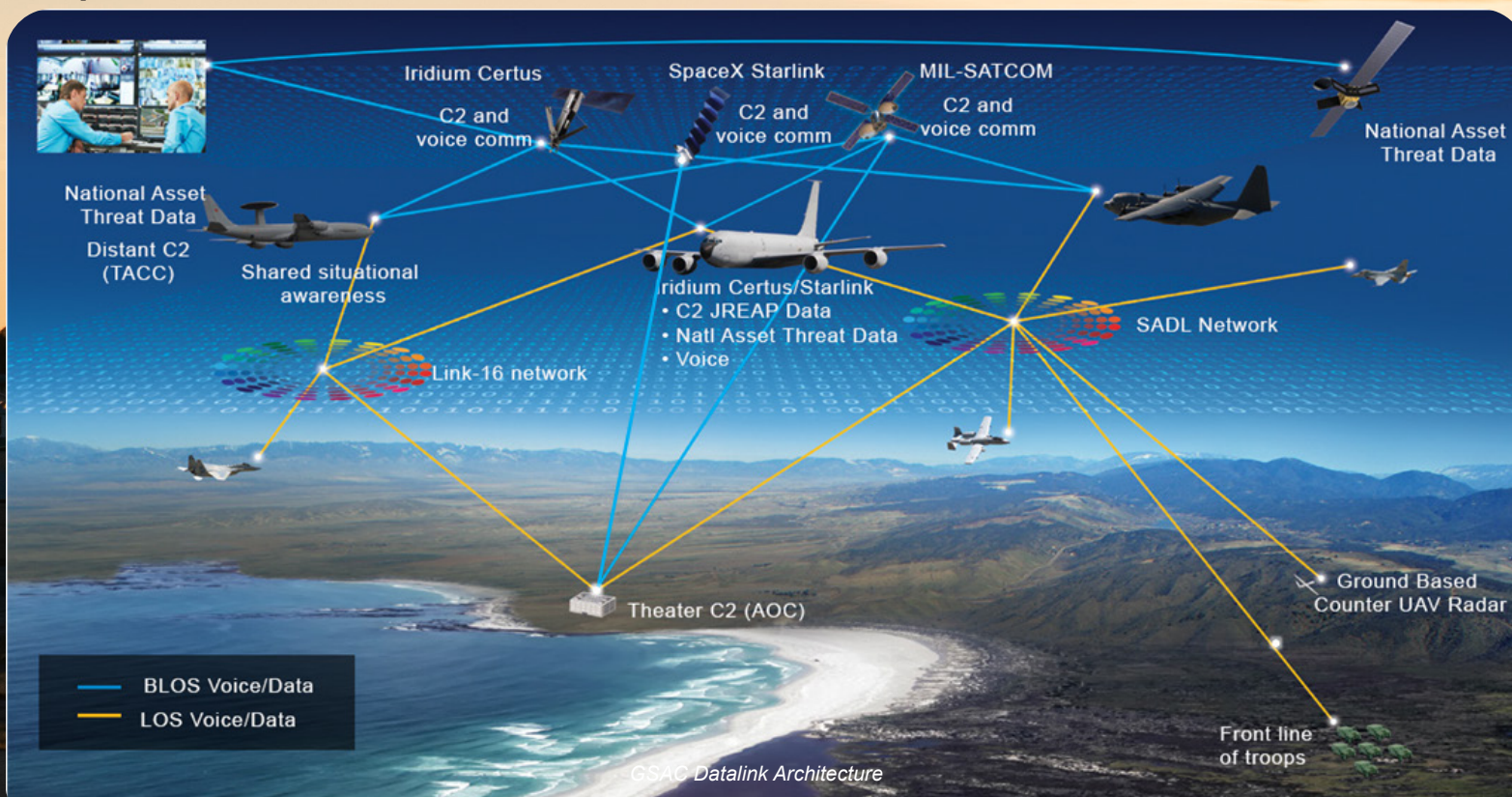


Tablet w/ Calculated Dynamic Threat Distance

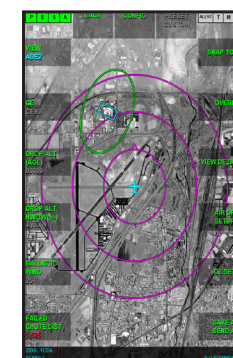
Tactical Android Display (TAD). Security enhanced Android tablet, portable smart display enables paperless cockpit. Rapid implementation of tactical data link communications, dynamic threat overlays and streamlined airborne operations. Uniquely integrated for complete situational awareness, threat avoidance and electronic attack. TADs mount on yokes or on stands to right/left of pilot/co-pilot/crewmember.

Global Secure Airborne Communication (GSAC) Software for Android. Borsight's Situational Awareness, Threat Protection, and Data Link Gateway software is integrated into the TAD for maximum crewmember flexibility. The Electronic Flight Bag includes Geo-referenced approach plate and charts:

- RPF Maps (FalconView Maps)
- CIB Imagery
- 1/4 Meter Imagery
- Data Link Overlays (C2 JREAP A/B/C, Custom)
- Radio Integration (AF Satcom, SADL, Link 16, SpaceX Starlink, Iridium Certus)
- Weather Overlays
- Integrated Electronic Flight Bag (Always Connected)
- Geo-referenced Low/High Charts
- Geo-referenced Approach Plate
- Tele-Medicine for Medivac Operations (Data & Voice)
- Mobility Aircraft Communications Addressing and Reporting System (MACARS)
- Safety Services
- Cross Domain Encryption
- Electronic Order of Battle Integration (EOB)
- Threat Surveillance and Reporting
- Battle Management Integration
- C2 Gateway
- ALT NAV Management



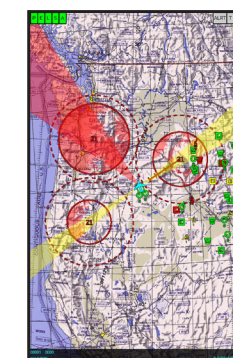
Gateway Systems. Borsight delivers next-generation with enhanced situational awareness, threat protection and communications tools. The program provides pilot, co-pilot, navigator, mission operator and boom operator with individual flight management systems and situational awareness mission displays, as well as enhanced airborne gateway options to Theater Commanders. The system utilizes multiple data link radios to provide inter-generational as well as multi-national aircraft interoperability, national asset geolocation threat data and real time threat distance calculation to maximize the aircraft mission set.



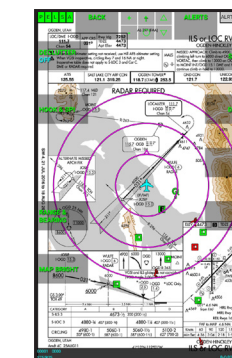
Satellite Imagery is Geo-Referenced with Air Drop Estimate (ADE) Overlay



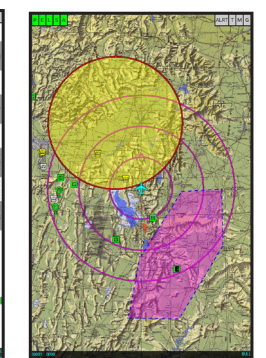
Data Link Overlays from Link 16, SADL, AF Satcom, and Iridium Certus



Correlated and Geo-Referenced Threat Overlays along with Calculated Dynamic Threat Distance



Connected Electronic Flight Bag utilizes Geo-Referenced NGA/FAA Approach Plates and Charts



Completely Integrated for use with JMPS, FalconView, and PFPS (example of FalconView Drawing File shown above)